

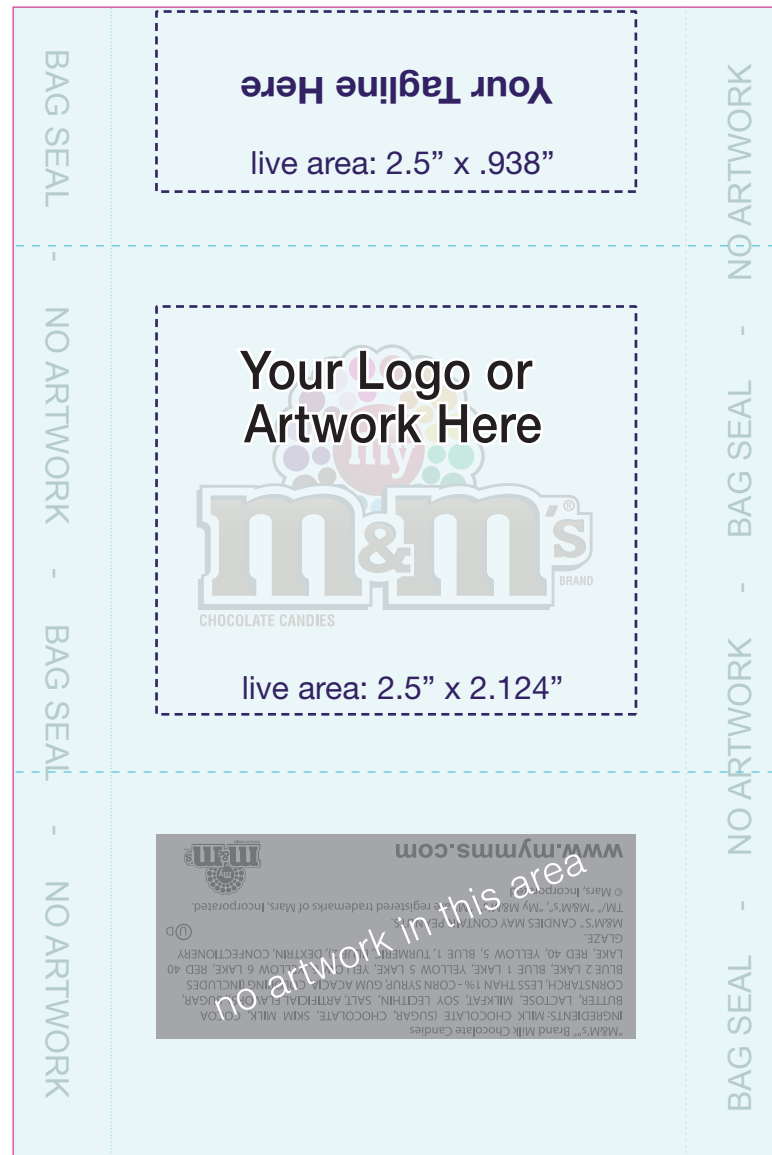


# Popular design ideas for Personalized Packaging (Small Bag)



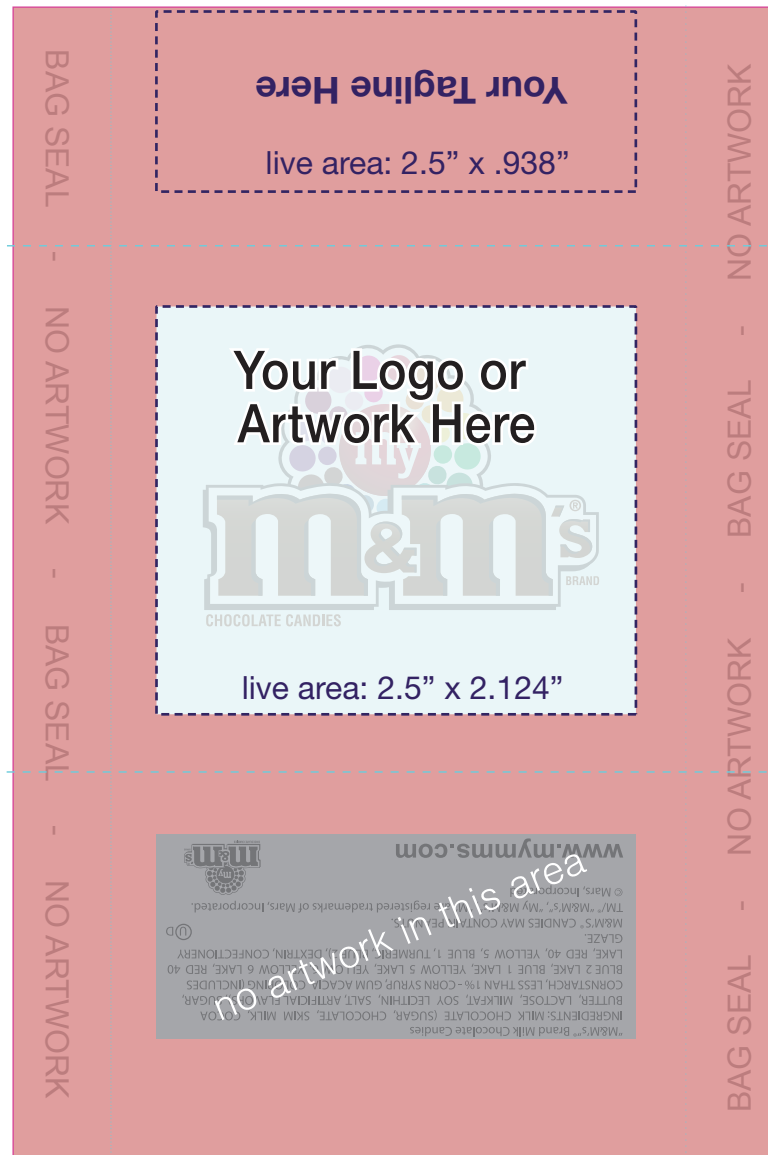
### A

#### Clear bag with logo/artwork



### B

#### Solid color bag with logo/artwork placed in clear window



### C

#### Solid color bag with logo/artwork placed above small clear window



4"

4"

4"

6"



Represents clear bag film.



Represents bag film. Bag film can be clear or any solid color (use Pantone Solid Coated as your reference).



Represents your logo in an optional clear film window.



Represents bag film. Bag film can be clear or any solid color (use Pantone Solid Coated as your reference).



Represents a clear film window below/above/next to your logo.

----- Represents bag fold.  
(dotted lines do not print)

Your logo and /or artwork can be positioned to your needs (i.e. portrait, landscape)

Bags are printed with digital offset 4 color process